

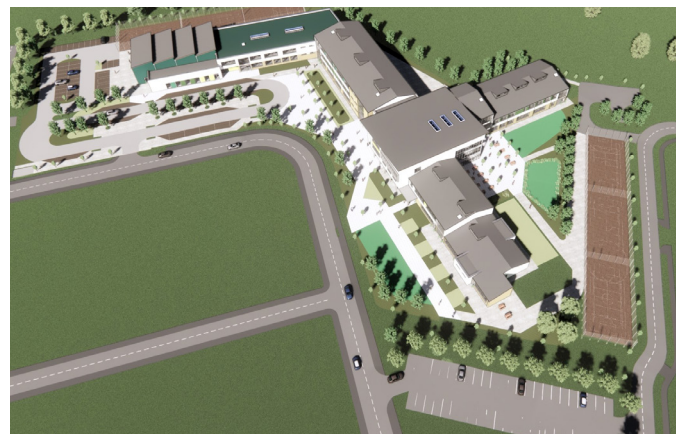


Edmund Rice College, Carpenterstown.

Edmund Rice College is a co-educational voluntary secondary school on lands at Phoenix Park Racecourse, Castleknock, Dublin 15. This is a Design & Build project of a new 11,265sq.m, part three-storey, part two-storey school with four special needs units, general purpose area, PE hall, ancillary teaching and staff accommodation.

A new set-down area with new pedestrian and cycle access, associated car parking, external ball courts, landscaping, connection to public services and all associated siteworks are also included. The new building is to be delivered on a phased basis.

The site is bound by St. Brigid's GAA Club to the West and North and to the South and East by a large housing development, currently being constructed by another company and is serviced by a newly constructed access road off the R147 Navan Road, which includes services within the new road/footpath. Once complete this state-of-the-art new secondary school will accommodate 1,000 students in the community of Dublin 15.



CLIENT
Department of Education

ARCHITECT
Healy Partners Architects

VALUE
€24 Million