

JJ Rhatigan & Company is one of Ireland's leading Design & Build contractors with offices in Galway, Dublin, Cork, Sligo and London and draws on more than 60 years of experience to deliver the highest levels of quality, safety and technical expertise to our clients in the Residential sector.

With specialist knowledge of multi-residential and mixed use projects, we have a solid understanding of the end user and client need. The combined breadth of our capabilities, the depth of residential expertise and our dedicated customer service ensures we continue to deliver high quality and innovative projects that last the test of time.

The longevity of our business and the communities in which we operate are of significant importance to us. The dedication of our people and the shared values which unite us give our partners and clients the confidence to trust us and do business with us repeatedly.

JJ Rhatigan
Building Contractors

JJ Rhatigan
Building Contractors

Apartments

Head Office
Wolfe Tone House
Fr Griffin Road
Galway
T: +353 91 580 800
F: +353 91 580 888
E: building@jjrhatigan.com

Dublin Office
Thomas Burgh House
Newmarket Square
Dublin 8
T: +353 1 478 6900
F: +353 1 478 6901
E: dublin@jjrhatigan.com

Cork Office
1st Floor, Building 1000
Gateway Business Park
Old Mallow Rd, Cork
T: +353 21 494 2721
E: cork@jjrhatigan.com

Sligo Office
Baymount House
Ballinac, Sligo
T: +353 71 914 7100
F: +353 71 914 7599
E: sligo@jjrhatigan.com

London Office
Anna House
214-218 High Road
Seven Sisters
London N15 4NP
T: +44 845 399 2310
E: london@jjrhatigan.com

www.jjrhatigan.com



Client
Shorview Properties Ltd.

Architect
Reddy Architecture

Project
The Telford Building and
The Hibernia Building, Dublin

Value
€31 million

Description
The Telford Building is a six storey apartment building consisting of two blocks of 11 and 20 luxury apartments over ground floor retail space. The Hibernia Building is also a six storey apartment building consisting of two blocks of 18 and one block of 13 luxury apartments over ground floor commercial and crèche space. Both buildings have -1 and -2 basement parking levels.

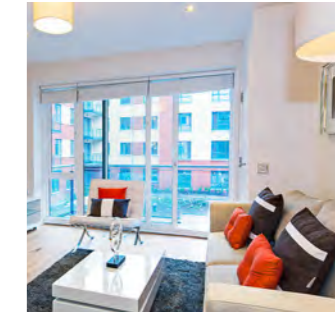
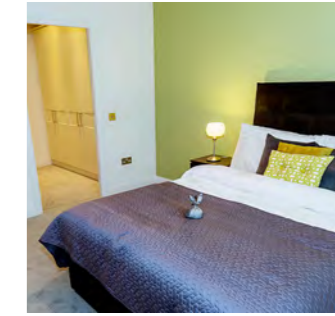
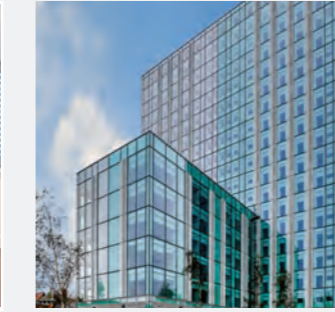
Client
Colliers Wood Investments Ltd

Architect
David O'Malley Architects

Project
Colliers Wood Tower, London

Value
€28.8 million

Description
This design & build project involved the partial demolition and structural alterations to the existing tower block and the construction of a new 6 storey concrete framed building connected to the existing tower. The development consists of 182 apartments, ground floor retail units and extensive landscaping works.



Client
C/O Grant Thornton

Architect
McCrossan O'Rourke Manning

Project
St. Edmunds Apartments

Value
€9.8 million

Description
The project comprised the completion of the design & build out of 122 partially completed apartments over 4 to 5 floors and a basement carpark, including courtyard podium, external works, landscaping and boundary treatment to the site.



Client
Glenkerrin Investments

Architect
O'Mahony Pike Architects

Project
The Grange Mixed Use Residential & Commercial Development, Dublin

Value
€20.7 million

Description
The Grange is a mixed use residential and commercial development including luxury apartments and penthouses, a gate lodge, concierge office, crèche and nursing home. Block D comprises of the design and build of 52 apartments (5 storey plus set back penthouse built on a podium over a basement carpark).



Client
Shorview Properties Ltd.

Architect
Reddy Architecture

Project
The Kestral Building, HSQ, Dublin

Value
€21.5 million

Description
Part of the Heuston South Quarter Mixed Use Development, this included the construction of the Kestral building consisting of 123 one, two and three bed apartments and penthouses across three separate blocks over 1,500m² ground floor supermarket and retail space.



Client
Callis Yard Property Development LLP

Architect
KDS Associates Ltd

Project
Callis Yard, Woolwich, London

Value
€39 million

Description
This project comprises of the development of 152 apartments in Callis Yard, London. The apartments consists of a mix of private dwellings, shared ownership dwellings and rented apartments.



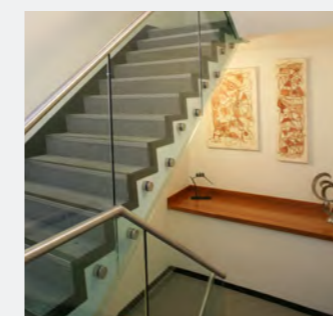
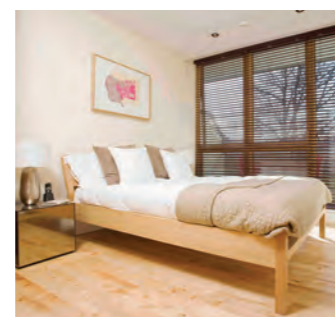
Client
Shorview Properties Ltd.

Architect
Reddy Architecture

Project
The Dargan Building and Sancton Wood Apartments, Dublin

Value
€47 million

Description
Consisting of 4 residential cores arranged around a mezzanine level courtyard there are 94 apartments in total made up of 16 one beds, 62 two beds, 19 three beds and 6 three bed duplex apartments. The ground floor and mezzanine level retail space is accessible from the existing ground floor levels via stone steps at both the north and south elevations of the courtyard.



Client
RCDL

Architect
A&D Wejchert Architects

Project
Father Griffin Road Mixed Use Development, Galway

Value
€8.5 million

Description
This mixed use development comprises of a Supermarket, Medical Suite, Post Office, 36 luxury apartments, offices and underground car parking. Features include limestone to front curved elevation, use of Danish windows (hardwood internally and aluminium externally), cedar cladding to courtyard elevations.

Client
RCDL

Architect
Reddy Architecture

Project
Castleway Mixed Use Development, Dublin 8

Value
€20 million

Description
This mixed-use six storey over double basement development, features ground floor commercial/retail units and seventy seven luxury apartments set around a secluded landscaped courtyard.

